



LTC-SR60

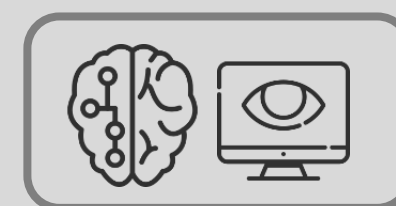
LPR specific camera product which is designed and built to fit different use cases of LPR application.

TECHNICAL SPECIFICATIONS

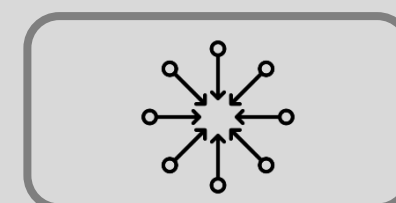
Sensor	CMOS
Resolution Max.	1920 x 1080
Max Vehicle Speed	60 km/h (Depend on installation)
WDR	Yes
Frame Rate	H.264: 1920x1080 @ 60fps H.264: 1280x720 @120fps H.264:640x480 @30fps
Video Stream	H.264, MJPEG Streaming: Dual Codec (H.264, JPEG) Selectable Support Simultaneous multiple streams
Lens	12mm IR Lens
Network Protocol	IPv4,TCP/IP,DHCP,HTTP,RTSP,SNTP,DNS
Access Agreement	ONVIF
Operating Temperature	-20°C to 60°C
N.W. (approx.)	-
IP Rating	IP66

FEATURES:

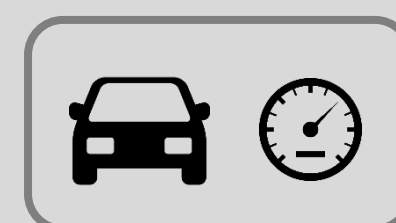
Deep Learning



Centralized Processing



Support max speed 60km/hour





LTC-SR120

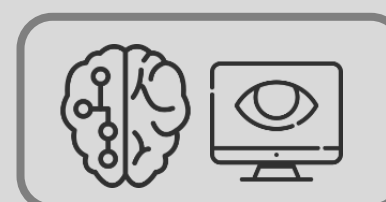
LPR specific camera product which is designed and built to fit different use cases of LPR application.

TECHNICAL SPECIFICATIONS

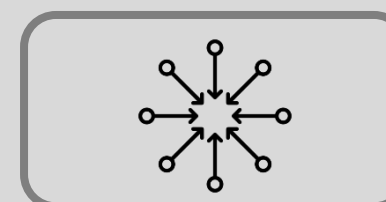
Sensor	1/2.8 " Mega pixel Exmor progressive CMOS sensor
Resolution Max.	Full HD/1080P(1920x1080) + Full D1
Max Vehicle Speed	120 km/h
WDR	Yes
Frame Rate	25fps
Video Stream	H.264& M-JPEG video stream: video out multichannel video at max. Resolution. Frame rate and video steam adjustable,H.264 support VBR/CBR
Lens	f= 6mm-22mm 3MP fixed lens
Network Protocol	IPv4, TCP/IP, UDP, HTTP, DHCP, RTP/RTCP/RTSP, FTP, UPnP,DDNS, NTP, IGMP, ICMP , etc Network
Access Agreement	WEB, SDK API, ONVIF
Operating Temperature	-10°C to 50°C
N.W. (approx.)	2.5 KG
IP Rating	IP66

FEATURES:

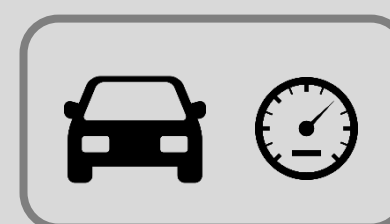
Deep Learning



Centralized Processing



Support max speed 120km/hour





LTC-SR250

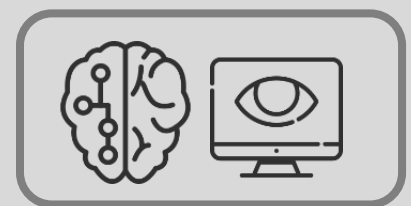
LPR specific camera product which is designed and built to fit different use cases of LPR application.

TECHNICAL SPECIFICATIONS

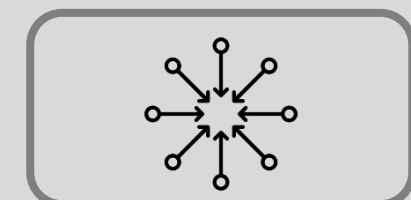
Sensor	1/1.8 Global Shutter CMOS
Resolution Max.	2048 x 1536 (3MP)
Max Vehicle Speed	250 km/h
WDR	Yes
Frame Rate	AEB off: 55fps @ 2048 x 1536 60fps @ 1920 x 1080 AEB On: 30fps @ 1920 x 1080 (Stream 1, Stream 2) 60fps @ 1920 x 1080 (Stream3)
Video Stream	H.265, H.264, MJPEG
Lens	f = 12mm-40mm Vari-focal, Remote focus
Network Protocol	IPv4, IPv6, TCP/IP, HTTP, HTTPS, UPnP, RTSP/ RTP/RTCP, IGMP, CIFS/SMB, SMTP, FTP, DHCP, NTP, DNS, DDNS, PPPoE, CoS, QoS, SNMP, 802.1X, UDP, ICMP, ARP, TLS, SSL
Access Agreement	ONVIF
Operating Temperature	0°C to 60°C
N.W. (approx.)	6.482KG
IP Rating	IP68, Vandal-proof IK10

FEATURES:

Deep Learning



Centralized Processing



Support max speed 250km/hour

